

Volume 12  
Issue 30  
Tuesday  
September 19, 2023

# Eastend Echo

## Discover Eastend



World's Largest T.Rex

This Week Triways is picking up  
TRASH  
in the GREY bins

### KEN & ETHEL WILLS WIN EVERETT BAKER AWARD

Ken and Ethel have received some well-deserved recognition for their many decades of hard work preserving the history and culture of Eastend and Saskatchewan. They have volunteered so many "hours" that it has clocked into literal "years" of their lives strictly in voluntary service. They are a treasure and jewel of this town in my opinion. The town of Eastend has written a commendatory letter in praise of Ken and Ethel's history of volunteering that you will find inside. The Awards will be given during the SHFS Zoom AGM on September 23rd. If you would like to see the award ceremony, please register by September 21st at <https://www.surveymonkey.com/r/shfs2023>

### STAYIN ALIVE CHOIR

You may remember the "Stayin' Alive (Not Quite Expired) Choir" as that group of 60+ singers from across the Southwest meeting in Shaunavon to put on shows featuring songs by AC/DC and Tom Petty. Well, they're putting on another show Sept 30 in Shaunavon at The Bridge located across from Red Apple. They are also looking for new members, and they have lowered the entrance age limit for you young middle-agers with a voice. More concert info inside.

### CATTLEMEN'S GOLF TOURNAMENT COMING NEXT WEEK

This Saturday, the Cattlemen's Golf tournament takes place at the Streambank. The weather forecast looks favorable for Saturday, and there are still spots open for those late-joiners. For \$100 you get 18 holes of golf followed by a delicious steak dinner of Canadian beef; the world's finest! Contact Ian or Heidi at 295-4040 to register or for more info.

### MEMORIAL HALL RECEIVES INNOVATION GRANT

The Eastend Memorial Hall Board has received a generous \$5,000 grant from Innovation Federal Credit Union to be used for refinishing the hard wood flooring of the Memorial Hall. The Memorial Hall Board gratefully thanks the good people at Innovation for their consideration for this grant; it helps keep small town venues like the Hall usable for many more years to come.

### YEARS GONE BY

Lorraine has a look back at September yesteryears through the eyes of the Eastend Enterprise. The old newspaper is no longer around, but you can find them on film at the Eastend Library.. Thanks to Lorraine for her determination and dedication to sharing this with all of us.

**LISTING OF THE WEEK**

NE 3-8-20 W3    MLS# SK945477    \$285,000

Liz Spetz    306.297.8804    [access.liz@sasktel.net](mailto:access.liz@sasktel.net)  
Ashley Maddess 306.297.7745    [access.ashley@sasktel.net](mailto:access.ashley@sasktel.net)

ACCESS REAL ESTATE INC. REALTOR    MLS    REALTOR.ca    Instagram    Facebook

**JBM Plumbing**

FULLY LICENSED/BONDED  
GAS CONTRACTOR

For plumbing & any  
gas appliance replacement  
or repair.  
*Done right the first time!*

Now Offers  
**Drain Cleaning Services**

Call Brad 306-315-7546

SOUTHWEST WASTE MANAGEMENT AUTHORITY

**Regional Landfill**

Located on Highway 13

Approximately 3km West of Dollard

Phone: 306-297-4020

Summer Hours from May 1

Monday to Saturdays 9:00am to 4:30pm

Closed on Statutory Holiday Weekends



Winter Hours from Oct 1

Monday to Fridays 9:00am to 4:30pm

Closed on Statutory Holidays



Investors Group Financial Services Inc., \*I.G. Insurance Services Inc.

**M. Scott Morvik, B.Mgmt  
Consultant**

**Jesse Gordon  
Associate Consultant**

115 Maple Avenue South, Eastend, SK S0N 0T0

Ph. (306) 295-4060

Fax (306) 295-3220

scott.morvik@investorsgroup.com

jesse.gordon@investorsgroup.com

\* License Sponsored by The Great-West Life Assurance Company



APPLIANCES, FURNITURE,  
MATTRESSES, VACUUMS,  
TV'S, HOME DECOR AND  
MORE

FREE DELIVERY TO EASTEND  
**(306) 297-4000**

# Jack's Cafe

## CanAsian Cuisine

*Jacks Is Closed This Monday and Tuesday.  
Open again on Wednesday at 8am  
September/October Hours*

<b>Monday</b>	<b>OPEN 11:00 am - 8:00 pm</b>
<b>Tuesday</b>	<b>OPEN 11:00 am - 8:00 pm</b>
<b>Wednesday</b>	<b>OPEN 8:00 am - 8:00 pm</b>
<b>Thursday</b>	<b>OPEN 8:00 am - 8:00 pm</b>
<b>Friday</b>	<b>OPEN 8:00 am - 8:00 pm</b>
<b>Saturday</b>	<b>OPEN 8:30 am - 8:00 pm</b>
<b>Sunday</b>	<b>OPEN 8:30 am - 8:00 pm</b>

**Phone number: 306 295 3313**



Doctor and Nurse Practitioner  
Schedule for September

*The Dr. is IN: Sept 6, 20, 27*

*The NP is IN: Sept 5, 11, 12*

*Please Phone for Appointments*

To book an appointment  
**NEW Phone: 295-2000**  
Monday-Friday, 8:00am-4:30pm  
**same-day appointments available**  
EWWHC Lab Hours:  
**Lab Open**  
**By**  
**Appointment Only**

Tue 19 Sep	Wed 20 Sep	Thu 21 Sep	Fri 22 Sep	Sat 23 Sep
18°C	18°C	19°C	23°C	20°C
Clearing	Sunny	Periods of rain	Sunny	A mix of sun and cloud

The Council of the Town of Eastend would like to congratulate Ethel and Ken Wills on being awarded the Everett Baker Award for Saskatchewan Heritage.

This award is named for the Saskatchewan Heritage Folklore Society's (SHFS) first president, Everett Baker. Throughout his life, Everett Baker was a strong believer in the importance of understanding the past to build a better future, and as such, he worked tirelessly to preserve local history.

In that spirit, the Everett Baker Award for Saskatchewan Heritage recognizes individuals, groups or organizations who have gone "above and beyond" to preserve and promote heritage in Saskatchewan. The award also recognizes efforts to call public attention to aspects of little-known Saskatchewan history.

Ethel and Ken Wills have volunteered for countless hours over many years to discover, share and preserve the history of Southwest Saskatchewan for future generations.

Under Ethel and Ken's guidance, the Eastend Historical Museum has facilitated the contributions of resources of time, physical work and funding from individuals, private businesses, other town organizations, local government offices, neighbouring Hutterite Colonies, and generous visitors to make the dream of a new museum building a reality.

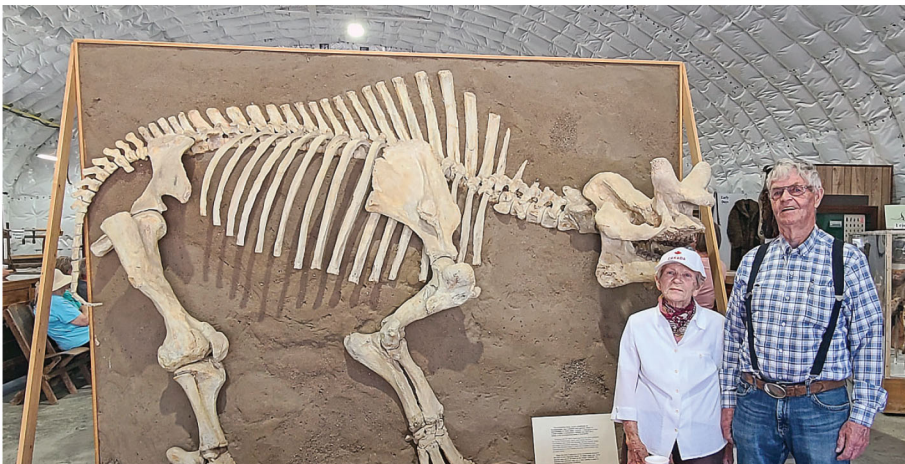
In 2014, the decision was made by the volunteer Museum Board of Directors and Membership to take on the challenge of a new building as the Museum's current home (the Old Pastime Theatre since 1975) had reached the end of its life. This challenge was not taken lightly, as it was an enormous undertaking for a small town with a population of 503.

Led by the aging but endlessly optimistic Ethel and Ken, it took 7½ years and thousands of hours of volunteer work to complete the new building with 3,500 square feet of exhibit and 6 programming space. The Museum is now a great gathering place for the community, with activities and workshops for all ages.

Based on their tireless efforts, in 2022 The Town of Eastend received a Special Mention for the "Increased Promotion of our Cultural and Natural Heritage" by Saskatchewan Communities in Bloom.

Thanks to all the Museum's volunteers, and especially Ethel and Ken, for never losing sight of the vision to preserve the heritage and history of the Southwest for generations to come.

The Awards will be given during the SHFS Zoom AGM on September 23rd. If you would like to see the award ceremony, **please register by September 21st** at <https://www.surveymonkey.com/r/shfs2023>



## 100 Years Ago – 1923

In Frontier, a 2 storey general store (24'x48') is being built by L.A. Anderson; part of the building will be used as a post office. Mr. Ole Heggstad is also erecting a new general store (24'x60') with a glass front. Just across the street Gilbertson Bros are completing a hardware store and garage. A new restaurant will open soon on Main St. and a municipal office is being renovated by secretary, Geo. Gilbertson. There are 5 elevators completed and ready to handle this year's big crop. Many yields are expected to go as high as 30-40 bushels to the acre.

Radke Bros., while threshing on the George Metzger farm, near Ravenscrag, lost their separator from a fire started when a sheaf, containing a box of matches, passed thro the machine setting fire to the straw stack. A few days previously a steel bar, concealed in a sheaf, caused severe damage to their machine. The men are forced to put a watchman on duty to protect their property.

1000 acres of corn have been seeded in the Eastend, Ravenscrag, Frontier, and Dollard areas with the majority of fields being 5-10 acres in size. S.A. Gordon of Eastend seeded 100 acres with the greater part maturing before the frost came. A large increase in the acreage of corn seeded is expected next year.

## 90 Years Ago – 1933

Clint Lewis and Geoff Williams went trout fishing at the headwaters of the Frenchman Creek. They caught a trout measuring 27.5" and tipped the scales at 7.5 lbs. The head of this Loch Leven variety is being preserved and may be seen at Sam's Service Station.

All pupils attending the Eastend Public School whose parents or legal guardians are not ratepayers or residents of the Eastend School District will be required to pay tuition. High school students - \$10 per annum; lower grades - \$10 per family or \$5 for one child per annum.

Unable to pay a fine, imposed by a Robsart court, for driving a vehicle without lights, a resident was escorted to a Regina jail to serve a term of 30 days.

## 80 Years Ago – 1943

The Wartime Prices Board announced ration allowances for jams, jellies, syrups and canned fruits. 2 – "D" coupons will be available for each month. For each coupon the purchaser will have a choice of:

6 oz. jam, jelly OR

10 oz. molasses or maple syrup OR

10 oz. canned fruit OR

12 oz. cane or corn syrup OR

½ lb. of sugar

Farmers may now keep steel drums containing gasoline, oil or grease on their farms so long as they are required to store their contents. Previously farmers were requested to return the drums after one month.

With high flood water and seepage from the irrigation canal a considerable portion of the river bank has collapsed near the Henderson property taking with it trees and some of the garden. Material to fix this will be supplied by the Water Dev. Branch in Regina and the labour and equipment to be supplied by P.F.R.A.

With hunting season opening shortly, sportsmen who have ammunition on hand from previous years are privileged to use it. The officials of Wartime Prices and Trade Board have stated there will be no sales of ammunition for sporting purposes.

Commissioner Wood of Ottawa and Inspector Thatcher of Regina visited the Hensman ranch and purchased 4 black young horses, sired by Tangletoes. They will be sent to the old Fort Walsh police post for training.

Peculiar and hard to account for is the recent movement of thousands of frogs making their way towards the creek just above the Hensman Ranch. The road was covered with the moving mass apparently coming from the direction of sloughs on the open prairie.

Mr. Henry Lewis of Jumbo Butte district passed away at 100 years of age. Born in England, he came to Canada about 1840 with his mother aboard the "Emily Isle" – a 6-week voyage from Liverpool to New York, joining his father in Ontario.

### 70 Years Ago – 1953

Torger Tysseland and his wife have returned from Bergen, Norway after a 3 month holiday in their native land.

Several cases of polio have been reported in the Robsart and Vidora district.

### 60 Years Ago – 1963

After attending a palaeontologist convention in Edmonton, Eastend Museum was visited by a party of 40 geologists. A visit to the Hazel Hunter quarry at Calf Creek was accompanied by Kelly Kokott. Geologists attending were from the National Museum of Ottawa, New York, France, Germany, Sweden and Finland.

The hotel restaurant in Eastend has been taken over by Mr. & Mrs. Charles Monette of Lac Pelletier.

The Bethel Lutheran parsonage in Frontier, a 2 storey, 9 room house is listed for sale with removal.

Jessie Anne Tait was the first student from this district to graduate from the U of S, School of Nursing, at the University Hospital in Saskatoon.

Initiation Day was a day to be remembered by the Eastend Freshies as they were welcomed to High School. The new grade 9 class were "slaves" to their masters for the day – dressed in uncomfortable attire, carrying the seniors' books and trudging along off the sidewalks with many funny and unusual acts being carried out. One grade nine male made a dashing figure dressed in a gold sweater, pleated skirt and a filmy scarf covering his curls. "Judge Grundler" handed out punishments and was followed by a dance to end the day.


### 50 Years Ago – 1973

Mrs. Betty David, matron of Eastend Union Hospital, successfully completed a 2- year course in Hospital Administration at the University of Sask., placing first in her class.

The recent Blood Donor Clinic held in Shaunavon exceeded its quota of 300 pints by 15. This was due, in part, by the large number of Eastend residents who responded to the need for donors.

The Shaunavon Health Region Dental Clinic will be closed until further notice.

Dr. Delos Santos scored a hole in one at the Eastend golf course, #8 hole, par 3, 161 yards.



## THE STAYIN' ALIVE CHOIR'S ANNUAL CONCERT!



**When: Sat. Sept. 30/23 Doors open 7:00 pm;  
Concert at 8:00 pm**

**Where: The Bridge, 3rd Ave. West, Shaunavon**

**Adult: \$20    Student: \$10**

**Advance Tickets ONLY and Available from  
Shaunavon Physiotherapy (505 Centre St.)  
Grand Coteau Centre, Centre St. Shaunavon  
Eastend Agencies (104 Maple Ave. N.)  
Krankys (334 Redcoat Dr. Eastend)**

**For more info call: 306-297-7932**

Serving The Southwest



# ROOFPRO

**CONTRACTING LTD**

**Metal & Asphalt Roofing Specialists**

306.750.1431



**Congratulations to Ed Grubbe**  
Winner of The Wolf Willow  
Ladies Auxiliary 50/50 draw for **\$1277.50!**  
Thank you to **EVERYONE** for your support!

## EASTEND CATTLEMEN'S CLASSIC GOLF TOURNAMENT






### SATURDAY, SEPTEMBER 23rd

REGISTRATION 11:00AM  
LUNCH  
SHOT GUN START 12:00PM  
18 HOLES  
STEAK SUPPER TO FOLLOW  
GREAT PRIZES  
\$100/PERSON

EVERYONE WELCOME!

TO REGISTER CALL (306) 295-4040

COME OUT MEET NEW PEOPLE AND HAVE FUN!



## Taurus Geomatics

306-661-7632  
[www.taurusgeomatics.com](http://www.taurusgeomatics.com)

Surveying Services:  
Subdivisions  
Property Staking  
RPRs  
Construction Support

Grady S. Rowley

Bsc. S.L.S. P. Surv.

Passport Photos  
and Firearm License Photos  
Same-Day Service\*  
\$20 for 2 photos  
Available at  
Eastend Agencies  
\*restrictions apply



## You Broke Down In The Field!

It's OK, you got a new piece of equipment and went RIGHT back to WORK!

But, did you remember to tell your Insurance Broker to take off the old machine and add the new machine?

Don't pay for insuring something you don't own, and don't get left hanging during a claim to find you didn't add it to your policy.

Make Sure Your Policy Is Current

**Eastend Agencies Ltd.**  
401 REDCOAT DRIVE  
306-295-3655



**Eastend Housing Authority**  
has Low/Fixed Income Apartment  
Spaces Available at Valley Manor  
and Heritage House

Contact Bea at  
eastendhousing18@gmail.com  
or  
by phone at  
295-7272

### CONTACT US:

Have an event you want added to the  
Community Calendar?  
Have a story to share? Would you like to  
place an ad?

Email: [editor@eastendecho.ca](mailto:editor@eastendecho.ca)  
Phone: 295-7772  
Post: Eastend Echo  
Box 361  
Eastend, SK  
S0N0T0

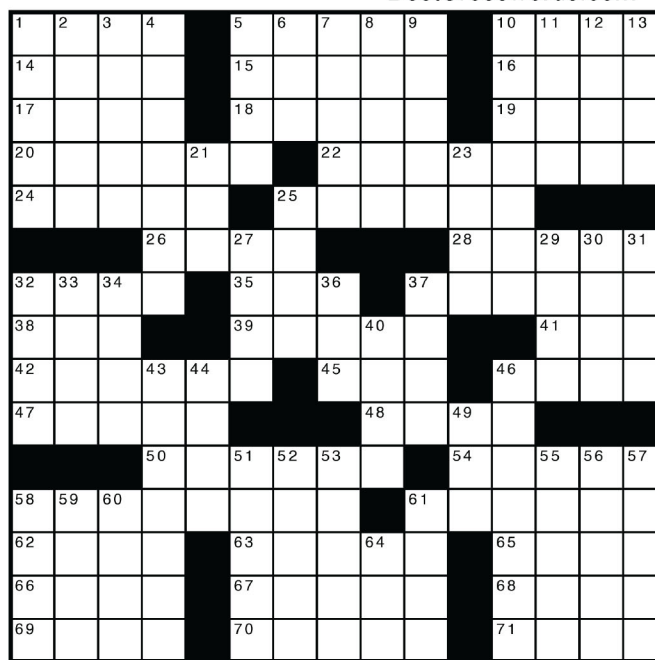
### Across

1. Precious stones
5. Grain stores
10. Swabbies
14. Test
15. Fill with glass
16. Busy as \_\_\_\_
17. Portico
18. Mortise insert
19. Christmas song
20. Some sculptures
22. Cheap copy
24. Root or Yale
25. Spenser's "The \_\_\_\_  
Queene"
26. Bluesy James
28. Rendezvous
32. Neuter
35. Bobby on the ice
37. Fix, as a shoe
38. Beer
39. Very hard mineral
41. Fuel type
42. Planks
45. When doubled, a dance
46. Puts into words
47. Egyptian peninsula
48. "Orinoco Flow" singer
50. Head cases?
54. Give a seat?
58. Magician
61. Complete
62. Switch back?
63. Musical drama
65. Brain wave
66. Start from scratch
67. Frenzied
68. Capone foe
69. Org.
70. First letter of the Hebrew  
alphabet
71. Gaelic language of Ireland  
or Scotland

### Down

1. Beau \_\_\_\_
2. Sing the praises of
3. New Zealand aboriginal
4. Drunk
5. Cpls.' superiors
6. Martinique, e.g.
7. Sri \_\_\_\_
8. Form of oxygen
9. Spanish Mister
10. Large ships
11. Peek follower
12. Coral habitat
13. Ego
21. Not in
23. Quote
25. Old MacDonald's place
27. Some digits
29. Eastern discipline
30. Kill
31. Dick Tracy's love
32. Chews the fat
33. "The Time Machine" race
34. Low in fat
36. VCR button
37. Tatum's dad
40. She played Carla on  
"Cheers"
43. Nocturnal carnivore
44. Desperate
46. Brie base
49. Strong desire
51. Bouquet
52. Sherpa's home
53. Peace goddess
55. Duck with soft down
56. Salad green
57. Mock, annoy
58. Lab fluids
59. Raw materials
60. Fishing gear
61. "From \_\_\_\_ according to his  
abilities..."
64. Final letters?

BestCrosswords.com



119 Maple Ave. S  
295-3714

- Oxy/Acetylene
- Welding Supplies
- Tires
- MIG gas



**STENERSON**  
AUTO PARTS

**K&H Painting**  
*COVERING YOUR NEEDS FOR*

- Wallpaper Removal
- Interior/Exterior Painting
- 18 Years Experience
- Free Estimates!

**CALL WENDY**

**306-295-7866**  
or **306-295-7665**

REFERENCES AVAILABLE UPON REQUEST



**ASK US ABOUT OUR SAUSAGE!** 

Box 274  
Eastend, Saskatchewan  
SoNoTo  
Phone: 306-297-3281  
Fax: 306-297-6445  
E-mail: jleroy@explornet.com

**Leroy's Custom Slaughter & Cutting**

**CALL US FOR YOUR CUTTING AND WRAPPING NEEDS**

**HIDDEN VALLEY FOODS**  
Eastend's Local Family Owned Grocery



FRESH PRODUCE • MEAT • DAIRY • BREAD • CANNED GOODS • DRY PACKAGED GOODS • FROZEN FOODS • CLEANING PRODUCTS • PAPER AND PLASTIC GOODS • BAKING SUPPLIES • CONDIMENTS AND SAUCES • CHIPS • CEREALS • BEVERAGES • PERSONAL CARE • CANDY • DESSERTS • SNACKS • WATER • COOKING UTENSILS • BABY ITEMS • PET FOOD • GREETING

**-NEW!-** Fresh Baked Goods!  
**Hidden Valley Foods Store Hours**  
Mon-Sat: 9am to 6pm  
Sun/Holiday: Closed

**306-295-3510**  
108 MAPLE AVE. S

**NEW! M&M FOOD MARKET NOW AVAILABLE**  
Thank You for Shopping Locally

SUDOKU PUZZLES OF THE WEEK

5		3	4		6	2	8
8			5	2	1		
	4				9		
3		4	6				
	6	1	8		5		
			2	5			9
		3			2		
	2	5	8				6
6	9	8		7	4		3

	8		6	9			
3		9					6
			1	2			9
		4			6		2
	6	3				4	7
2			9			6	
7				5	1		
5						7	4
				4	2		5

6				1	8	2	4
				5	9		
2			6				
						1	9
		4				5	
1	2	8					
					6		8
			1	5			
8	5	3	4				9

**Word Find**

Find These Words Backwards/Forwards, Up, Down or Diagonally

N	A	T	I	O	N	A	L	L	Y	P	I	G	S	S
L	A	N	C	E	O	L	A	T	E	N	T	B	S	S
L	E	C	A	R	I	I	G	R	F	O	E	E	E	U
I	H	A	R	V	T	I	P	A	R	T	N	N	S	O
V	T	A	R	W	I	L	L	E	O	T	E	U	U	E
E	E	A	R	I	E	L	T	K	S	S	N	N	O	N
R	E	A	R	X	I	E	E	U	O	T	N	P	I	A
W	E	I	I	B	M	N	G	O	O	T	S	E	C	R
U	E	T	L	O	I	U	P	I	U	T	A	R	A	T
R	Y	E	I	N	A	I	O	E	N	T	N	N	D	X
S	N	D	G	N	I	L	I	A	V	A	N	U	N	E
T	U	A	B	I	S	O	O	T	H	S	A	Y	E	R
A	A	L	T	E	R	N	A	T	O	R	N	D	M	S
E	E	A	F	O	R	W	A	R	D	I	N	G	X	S
E	E	R	C	A	N	D	I	D	A	T	E	S	U	T

- UNAVAILING
- AUDIOMETER
- PERPLEXITY
- MENDACIOUS
- LIVERWURST
- AUGUSTNESS
- EXTRANEOUS
- SOOTHSAYER
- FORWARDING
- BETOKENING
- INFALLIBLE
- CANDIDATES
- LANCEOLATE
- NATIONALLY
- ALTERNATOR

Word Search Solution

N	A	T	I	O	N	A	L	L	Y	P	I	G	S	S
L	A	N	C	E	O	L	A	T	E	N	T	B	S	S
L	E	C	A	R	I	I	G	R	F	O	E	E	E	U
I	H	A	R	V	T	I	P	A	R	T	N	N	S	O
V	T	A	R	W	I	L	L	E	O	T	E	U	U	E
E	E	A	R	I	E	L	T	K	S	S	N	N	O	N
R	E	A	R	X	I	E	E	U	O	T	N	P	I	A
W	E	I	I	B	M	N	G	O	O	T	S	E	C	R
U	E	T	L	O	I	U	P	I	U	T	A	R	A	T
R	Y	E	I	N	A	I	O	E	N	T	N	N	D	X
S	N	D	G	N	I	L	I	A	V	A	N	U	N	E
T	U	A	B	I	S	O	O	T	H	S	A	Y	E	R
A	A	L	T	E	R	N	A	T	O	R	N	D	M	S
E	E	A	F	O	R	W	A	R	D	I	N	G	X	S
E	E	R	C	A	N	D	I	D	A	T	E	S	U	T

Word Search Solution



**Across**

1. Restless desire
5. Nick and Nora's pooch
9. Old cloth
12. Vincent Lopez's theme song
13. Racket
15. "Peter Pan" dog
16. In the blink \_\_\_ eye
17. Disgusting
18. Famous last words
19. Dilapidated
21. Kelp
23. Small fastener
24. Rainy
25. Robbery at sea
28. Native American
33. Last letter of the Greek alphabet
34. Type of song, to be sung solo
35. Capone's nemesis
36. PC linkup
37. Scoff
38. Court fig.
39. Turkish titles
41. Uses a shuttle
42. Private student
44. Move
46. Mr. and Mr.
47. Perform in a play
48. Top-notch
49. Australian shrub
53. Divine
57. Hand cream ingredient
58. Unsoiled
60. The Emerald Isle
61. Comic Foxx
62. Conductor Georg
63. Farm structure
64. Shoe width
65. High level of satisfaction
66. IRS IDs

**Down**

1. Are you \_\_\_ out?
2. Beancurd
3. Extended family unit
4. Pocketbook
5. Regardless
6. Noise
7. Personal quirk
8. Inquires
9. Charge per unit
10. Chip in
11. Showy trinket
14. Spectacles or goggles
15. Unit of force
20. Killer whale
22. \_\_\_ Lingus
25. Like some bears and icecaps
26. Picture
27. Kidney-related
28. El Greco's birthplace
29. Hastens
30. "Hyperion" poet
31. Banana oil, for one
32. Politico Kefauver
34. Med school subj.
37. Science of bodies at rest
40. Soggy
42. Look after
43. Serving no function
45. IV units
46. Unification Church member, slangily
48. Playing marble
49. Uncovered
50. "Hard \_\_\_!" (sailor's yell)
51. Network point
52. Sleep like \_\_\_
54. The eyes have it
55. Potter's oven
56. Nephew of Abel
59. Building add-on