

Volume 12
 Issue 23
 Tuesday
 July 26, 2023



This Week Triways is picking up
TRASH
 in the **GREY** bins



LISTING OF THE WEEK

501 Front Street MLS#SK937654 \$69,900

Liz Spetz 306.297.8804 access.liz@sasktel.net
 Ashley Maddess 306.297.7745 access.ashley@sasktel.net

ACCESS REAL ESTATE INC. REALTOR REALTOR.ca Instagram Facebook

DINO DAYS 2023 IN THE BOOKS

It was a scorcher of a weekend, but it didn't stop the crowds from enjoying everything that Dino Days 2023 had to offer. From the beer gardens, to the home run derby, to the demolition derby and dance, and Art Walk and unveiling of the rostrum produced by the late Nick Saville and finally to the Caesar Sunday in the town square. The people were abundant, and so are the photos inside. This year's Dino Days, the Eastend art community utilized this special weekend to celebrate the life of artist Nick Saville whom we lost this year. Credit goes to Angie and Katherine for doing so much work to get Dino Days to be the party it was for everyone. Thanks to Evelyn Sankey, Kim Redlin, and Heidi Topham for the photos submitted to the Echo for this week.

EXTREME HEAT WARNING

This week we are experiencing extreme high temperatures. For the safety of you and your loved ones, follow the advice of Environment Canada for these conditions:

During Heat Waves:

- Drink fluids, especially water, before feeling thirsty.
- Slow down! Your body can't function as well in high temperatures.
- Cool down in cool store, public library, or community pool.
- Shade heads and faces with a loose-fitting ventilated hat or umbrella when outdoors.
- Dress appropriately in light-weight, light-coloured, and loose-fitting clothing.
- Avoid getting sunburned. It decreases the body's ability to cool.
- Never leave infants, children or pets inside a parked vehicle.
- Remember to check on elderly family members, neighbours and friends to make sure they are comfortable and safe.

Common symptoms and treatment of hot weather illnesses: may be flushed at first, later ashen or purplish.

JBM Plumbing

FULLY LICENSED/BONDED
 GAS CONTRACTOR

For plumbing & any gas appliance replacement or repair.

Done right the first time!

Now Offers
Drain Cleaning Services

Call Brad 306-315-7546

SOUTHWEST WASTE MANAGEMENT AUTHORITY

Regional Landfill

Located on Highway 13

Approximately 3km West of Dollard

Phone: 306-297-4020



Summer Hours from May 1

Monday to Saturdays 9:00am to 4:30pm

Closed on Statutory Holiday Weekends



Investors Group Financial Services Inc., *I.G. Insurance Services Inc.

**M. Scott Morvik, B.Mgmt
Consultant**

**Jesse Gordon
Associate Consultant**

115 Maple Avenue South, Eastend, SK S0N 0T0

Ph. (306) 295-4060

Fax (306) 295-3220

scott.morvik@investorsgroup.com

jesse.gordon@investorsgroup.com

* License Sponsored by The Great-West Life Assurance Company



APPLIANCES, FURNITURE,
MATTRESSES, VACUUMS,
TV'S, HOME DECOR AND
MORE

FREE DELIVERY TO EASTEND

(306) 297-4000



Doctor and Nurse Practitioner
Schedule for July

The Dr. is OUT for July

The NP is IN:

July 10,11, 12, 17,18, 19, 24, 25

Please Phone for Appointments

To book an appointment

NEW Phone: 295-2000

Monday-Friday, 8:00am-4:30pm

same-day appointments available

EWWHC Lab Hours:

Lab Open

By

Appointment Only

Jack's Cafe

CanAsian Cuisine
All Day Breakfast
Lunch and Dinner
Steak Pasta Pizza Burgers
and More Choices!

Summer Hours

Mon - Fri OPEN 7:00 am - 8:30 pm
Sat & Sun OPEN 8:30 am - 8:00 pm

Phone number: 306 295 3313

Tue 25 Jul	Wed 26 Jul	Thu 27 Jul	Fri 28 Jul	Sat 29 Jul
31°C	30°C	26°C	27°C	25°C
A mix of sun and cloud	Sunny	Cloudy	Sunny	A mix of sun and cloud



Photo by: Heidi Topham





Photo by: Evelyn Sankey



Photo by: Kim Redlin

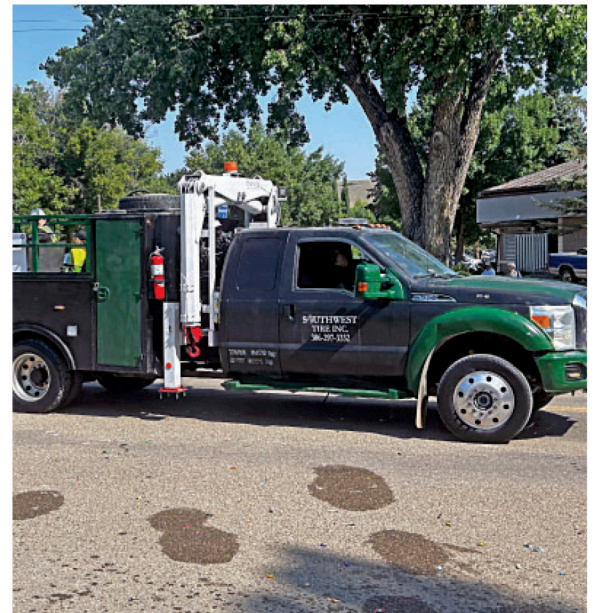


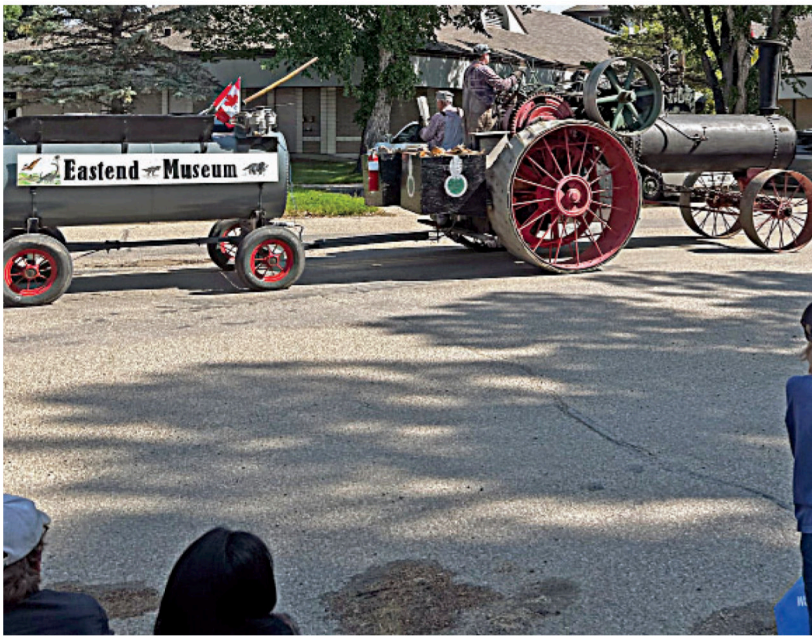


Photo by: Kim Redlin



Photo by: Kim Redlin











Permanent Full-Time Office Assistant

The Joint Municipal Office of the Town of Eastend and the RM of White Valley No. 49 invite applications for the position of a Permanent Full-Time Office Assistant.

Applications will be accepted until July 31, 2023 at 4:00pm.

Preference will be given to those who have the following qualifications:

- Previous Office Administration experience;
- Proficiency in Munisoft software and Microsoft Office;
- Strong organizational, communication and personable skills.

Candidates are invited to submit their detailed resume, including experience and work related references to the Municipal Office at 108 Maple Avenue North, Eastend, SK, PO Box 520 Eastend, SK S0N 0T0 or by email at rm49@sasktel.net

For more information please contact the Municipal Office at 306-295-3553.

The Councils wish to thank all who apply but advise that only those selected for an interview will be contacted.



NEW!

Passport Photos and

Firearm License Photos Same-Day Service* \$20 Flat Fee

Available at Eastend Agencies *restrictions apply



Letters To the Editor

Letters are presented as a public service and does not necessarily represent the views of this publication.

A Big Bouquet of Thanks...

Hello Editor,

A big bouquet to Kathryn of the Eastend Coop and two Hutterite men who rescued us after we encountered car problems on HWY 614 north of Eastend. And to Kathryn's husband Josh who drove us back to our accommodation in Tompkins. Everyone we encountered in our unexpected adventure were so kind and hospitable. Thank you!

Allan, Ailsa, Harv & Shelley



Taurus Geomatics

306-661-7632 www.taurusgeomatics.com

Surveying Services: Subdivisions Property Staking RPRs Construction Support

Grady S. Rowley Bsc. S.L.S. P. Surv.

Serving The Southwest

ROOFPRO CONTRACTING LTD Metal & Asphalt Roofing Specialists

306.750.1431

IT'S HAIL SEASON

Before the hail hits

Clear your eavestroughs of debris to minimize ice dams or water damage.

Inspect your roof for damage and repair any problem areas.

Remove weak branches or trees in close proximity to your home.

Store patio furniture and outdoor accessories in an enclosed space.

Move vehicles into a garage or use a hail protector cover to avoid costly repairs

Eastend Agencies Ltd.

401 REDCOAT DRIVE
306-295-3655



Eastend Housing Authority

has Low/Fixed Income Apartment Spaces Available at Valley Manor and Heritage House

Contact Bea at
eastendhousing18@gmail.com

or
by phone at
295-7272

CONTACT US:

Have an event you want added to the Community Calendar?
Have a story to share? Would you like to place an ad?

Email: editor@eastendecho.ca
Phone: 295-7772
Post: Eastend Echo
Box 361
Eastend, SK
S0N0T0

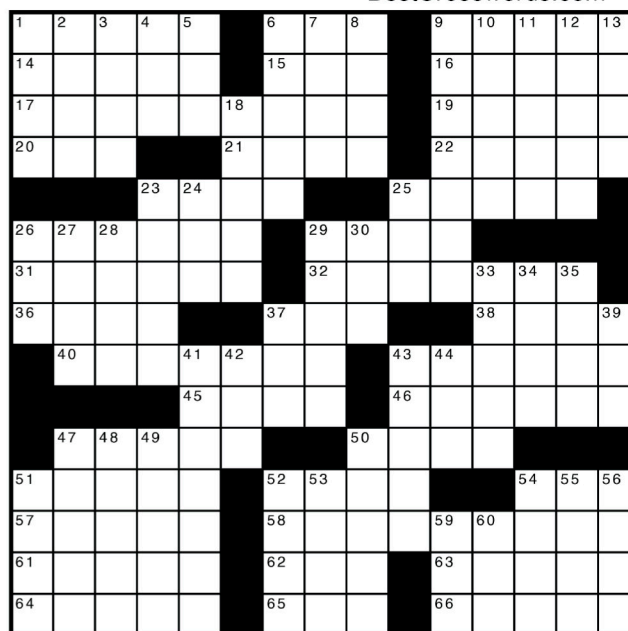
Across

1. Woody vine
6. Australian bird
9. Training group
14. Religion of the Muslims
15. Crosses (out)
16. At full speed
17. Eradicate
19. Pound parts
20. Movie backdrop
21. Rent-____
22. Register as a participant
23. Helper: Abbr.
25. More mature
26. Group that is part of a larger group
29. Unwritten
31. Regardless
32. Savage
36. Pocket bread
37. T.G.I.F. part
38. Util. bill
40. Comprising ten parts
43. Potemkin setting
45. Woody's son
46. Sell directly to the consumer
47. Harbor towns
50. Soft shoes
51. Biblical brother
52. Bridle
54. Brit. lexicon
57. Long for
58. Purity
61. Strikes out
62. ER VIP
63. Unconventional
64. Salad green
65. Wind dir.
66. Freshwater fish

Down

1. Untruths, tells falsehoods
2. Any of the Antilles
3. Got down

BestCrosswords.com



4. Where some vets served
5. ____ dreaming?
6. Strictly accurate
7. Intro to physics
8. Manipulator
9. First-magnitude star
10. Change for the better
11. "Inferno" writer
12. Kitchen gadget
13. Cabinet dept.
18. Beastly
23. Dam extending across the Nile
24. Ocean
25. Feedbag morsel
26. Plant juice
27. Ton, for one
28. Memory unit
29. Best
30. "ER" extras
33. Confronts
34. Socialite Maxwell
35. He played Ricky
37. Down with the flu
39. "Silent" prez
41. Corpulence
42. Surgery sites, briefly
43. Home of the Black Bears
44. Yr.'s end
47. Kitchen gadget
48. Papal garment
49. Gads about
50. Chop into small pieces
51. Electrically versatile
52. Frees
53. Slaughter in Cooperstown
54. Aware of
55. Creamy-beige color
56. Insect-repelling chemical
59. Barracks bed
60. Where It.'s at

119 Maple Ave. S

295-3714

- Oxy/Acetylene
- Welding Supplies
- Tires
- MIG gas



STENERSON
AUTO PARTS

K & H Painting

COVERING YOUR NEEDS FOR

- Wallpaper Removal
- Interior/Exterior Painting
- 18 Years Experience
- Free Estimates!

CALL WENDY

306-295-7866

or 306-295-7665

REFERENCES AVAILABLE UPON REQUEST

ASK US ABOUT OUR SAUSAGE!



Box 274
Eastend, Saskatchewan
SoNoTo
Phone: 306-297-3281
Fax: 306-297-6445
E-mail: jleroy@explomet.com

Leroy's Custom Slaughter & Cutting

CALL US FOR YOUR CUTTING AND WRAPPING NEEDS

HIDDEN VALLEY FOODS
Eastend's Local Family Owned Grocery



FRESH PRODUCE • MEAT • DAIRY • BREAD • CANNED GOODS • DRY PACKAGED GOODS • FROZEN FOODS • CLEANING PRODUCTS • PAPER AND PLASTIC GOODS • BAKING SUPPLIES • CONDIMENTS AND SAUCES • CHIPS • CEREALS • BEVERAGES • PERSONAL CARE • CANDY • DESSERTS • SNACKS • WATER • COOKING UTENSILS • BABY ITEMS • PET FOOD • GREETING

-NEW !- Fresh Baked Goods!

Hidden Valley Foods Store Hours
Mon-Sat: 9am to 6pm
Sun/Holiday: Closed

NEW! M&M FOOD MARKET NOW AVAILABLE

Thank You for Shopping Locally

☎ 306-295-3510
🏠 108 MAPLE AVE. S

SUDOKU PUZZLES OF THE WEEK

2	3	8		5	7	1	6
1			6	3			
6	5					3	
				4	3		1
	9	6				7	4
4			7	9			
		3					1 8
				1	2		9
5		1	8	6		4	2 3

7			4	3		9	2
					1		
5			7				
	7		6		9	2	4
2							6
6		4	2		8		3
					4		5
			3				
3		7		6	5		1

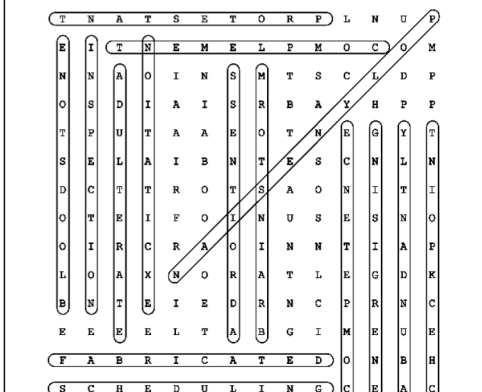
	2					7	
			9	1			2
				6		4	9 3
	5	4		7			
			6		9		
				5		3	7
9	1	6		2			
5				8	3		
		3					4

Word Find

Find These Words Backwards/Forwards, Up, Down or Diagonally

T	N	A	T	S	E	T	O	R	P	L	N	U	P
E	I	T	N	E	M	E	L	P	M	O	C	O	M
N	N	A	O	I	N	S	M	T	S	C	L	D	P
O	S	D	I	A	I	S	R	B	A	Y	H	P	P
T	P	U	T	A	A	E	O	T	N	E	G	Y	T
S	E	L	A	I	B	N	T	E	S	C	N	L	N
D	C	T	T	R	O	T	S	A	O	N	I	T	I
O	T	E	I	F	O	I	N	U	S	E	S	N	O
O	I	R	C	R	A	O	I	N	N	T	I	A	P
L	O	A	X	N	O	R	A	T	L	E	G	D	K
B	N	T	E	I	E	D	R	N	C	P	R	N	C
E	E	E	E	L	T	A	B	G	I	M	E	U	E
F	A	B	R	I	C	A	T	E	D	O	N	B	H
S	C	H	E	D	U	L	I	N	G	C	E	A	C

- BRAINSTORM
- POLYNESIAN
- CHECKPOINT
- EXCITATION
- ADULTERATE
- PROTESTANT
- COMPLEMENT
- FABRICATED
- ENERGISING
- BLOODSTONE
- INSPECTION
- SCHEDULING
- ABUNDANTLY
- ADROITNESS
- COMPETENCE



Word Search Solution

Across

1. Woody vine
6. Australian bird
9. Training group
14. Religion of the Muslims
15. Crosses (out)
16. At full speed
17. Eradicate
19. Pound parts
20. Movie backdrop
21. Rent-___
22. Register as a participant
23. Helper: Abbr.
25. More mature
26. Group that is part of a larger group
29. Unwritten
31. Regardless
32. Savage
36. Pocket bread
37. T.G.I.F. part
38. Util. bill
40. Comprising ten parts
43. Potemkin setting
45. Woody's son
46. Sell directly to the consumer
47. Harbor towns
50. Soft shoes
51. Biblical brother
52. Bridle
54. Brit. lexicon
57. Long for
58. Purity
61. Strikes out
62. ER VIP
63. Unconventional
64. Salad green
65. Wind dir.
66. Freshwater fish

Down

1. Untruths, tells falsehoods
2. Any of the Antilles
3. Got down



4. Where some vets served
5. ___ dreaming?
6. Strictly accurate
7. Intro to physics
8. Manipulator
9. First-magnitude star
10. Change for the better
11. "Inferno" writer
12. Kitchen gadget
13. Cabinet dept.
18. Beastly
23. Dam extending across the Nile
24. Ocean
25. Feedback morsel
26. Plant juice
27. Ton, for one
28. Memory unit
29. Best
30. "ER" extras
33. Confronts
34. Socialite Maxwell
35. He played Ricky
37. Down with the flu
39. "Silent" prez
41. Corpulence
42. Surgery sites, briefly
43. Home of the Black Bears
44. Yr.'s end
47. Kitchen gadget
48. Papal garment
49. Gads about
50. Chop into small pieces
51. Electrically versatile
52. Frees
53. Slaughter in Cooperstown
54. Aware of
55. Creamy-beige color
56. Insect-repelling chemical
59. Barracks bed
60. Where It.'s at